



5121



PAR-MOVE CONCEPT CENTER POST LEVER - NO LEVER TYRE CHANGER WITH BEAD BREAKER DISKS



Suitable for Tubeless tyre bead seating system (optional)



MOTOINVERTER

Faster, more accurate and reliable drive for your tyre changer.



5 YEAR WARRANTY ON GEARBOX and PAR-MOVE

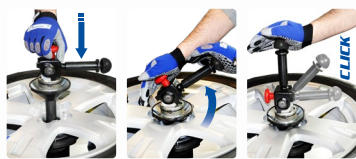
✓ Robust fixed vertical tower with innovative **parallelogram operating arm [Giuliano Patent]**.

✓ Equipped with **BP1 PLUS** bead pressing arm (standard), complete with self-storage function **[Giuliano Patent]**

✓ Vertical tower with **built-in air tank**

✓ Tools Storage Box (standard)

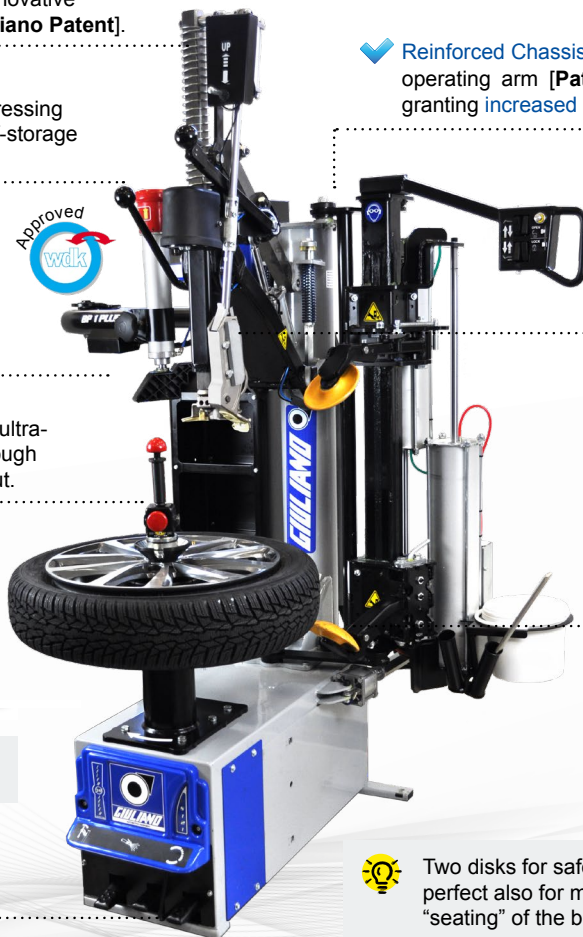
✓ **SMART LOCK [Giuliano Patent]** ultra-quick wheel clamping system, through cone and shaft with Smart Lock nut.



Less than **2 seconds** to have a perfect rim clamping.

✓ Tyre inflation by pedal (standard)

✓ Double rotation speed by pedal (motoinverter)



✓ **Reinforced Chassis.** Fixed vertical tower and parallelogram operating arm **[Patented]** makes S121 **extremely robust** and stiff, granting **increased rigidity** and eliminating all flexes.

✓ Operated by pedal and control console

✓ **Lever-No-Lever** tyre mounting / demounting system **[Giuliano Patent]**, (standard).



✓ Double arm/disk air operated bead breaker system

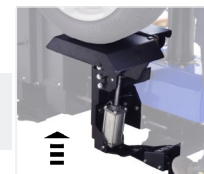
Bead breaker disks are slightly but purposely misaligned with the rim center for a better and faster penetration and immediate bead loosening, **Center Driven Concept [Giuliano Patent]**

Two disks for safe and fast bead breaking, perfect also for match-mounting and "seating" of the bead in its position.



✓ "Easy Access" extractable pedal box for quick service

A very practical **Wheel Lifter** reduces effort and increases productivity (optional).



220V-1ph Inverter

Available in:
 ● Blue Trim
 ● Black Trim
 ● Red Trim

STANDARD FEATURES

Rim clamping range	12" - 30"
Max. tyre diameter	1200 mm (47")
Max. tyre width	406 mm (16") *
Bead breaker cylinder force at 10 Bar	11770 N (1200 kg)
Max. wheel weight	80 kg
Operating pressure	8-10 bar (116 - 145 Psi)
Power supply	220V - 1ph
Motor power	0,75 kW - 2 speed
Rotation speed	7 - 16 rpm
Pre-set tyre inflating pressure	3,5 bar (50 Psi)
Net weight	365 kg
Max. overall dimensions	1120-1690x1280x1770-2200 mm

* For reverse mounted wheels, variable according to rim features

STANDARD ACCESSORIES



EXTENSIVE SELECTION OF STANDARD ACCESSORIES

● Bead lifting lever ● Lube paste bucket and Brush ● Plastic tyre lever ● Plastic protectors for QX mounting/demounting tool ● 2 Plastic protections for Smart Lock centering cone ● 2 Rubber protections for clamping chuck and driving pin ● Reduction ring for clamping chuck ● Plastic bead pressing clamp ● Set of rubber protectors ● Adjustment knob for Smart Lock ● Plastic cone Ø 70 mm ● Spare O rings for Smart Lock ● Air lubricator, air filter/water trap ● Work gloves